
Installation Instructions

Access Rights

When installing OPUS you need to have extended access rights, e.g. to write into the Windows directory and install drivers. **If you want to install or register OPUS, make sure that you have Windows Administrator rights.**

In case of installation as user there are no rights to edit the registry and *System32* directory. Therefore, when booting the computer the first time after installing OPUS you may get an error message indicating the missing *System32* driver file. In this case ignore the error message and start the *AdminBatch.cmd* file from the *C:\Program\OPUS* directory to add the appropriate driver and add entries into the registry. Make sure that you have administrator rights to be able to do so.

Checking Operating System Version

OPUS can be installed using Windows NT, Windows 2000 or Windows XP.

In case of Windows NT you have to additionally install *Service Pack 6*. Check whether this *Service Pack* has already been installed and proceed as follows:

- 1) Start the Windows Explorer.
- 2) Click on the question mark in the menu bar and select the *Info* command in the *Help* menu.
- 3) A dialog box pops up indicating the *Service Pack* version.

To be able to operate Ethernet controlled spectrometers (e.g. TENSOR, MPA, MATRIX, VERTEX), and to use the online help you need to have the Microsoft Internet Explorer 5.0 installed as minimum version.

Miscellaneous

Configure Windows in such a way that it is possible to see the file extensions of registered files. Open the Windows Explorer and select the *Folder Options* command in the *Extras* menu. Click on the *View* tab and do not activate the *Filename extension of known data types deactivated* check box.

Installing OPUS

Insert the OPUS installation CD into your CD drive. If you have not deactivated the *CD Autostart* option, the first dialog box will automatically prompt you to select the program language. Depending on the computer configuration, it may take some time until the dialog box appears. **Do not manually start the installation program from CD during this time.**

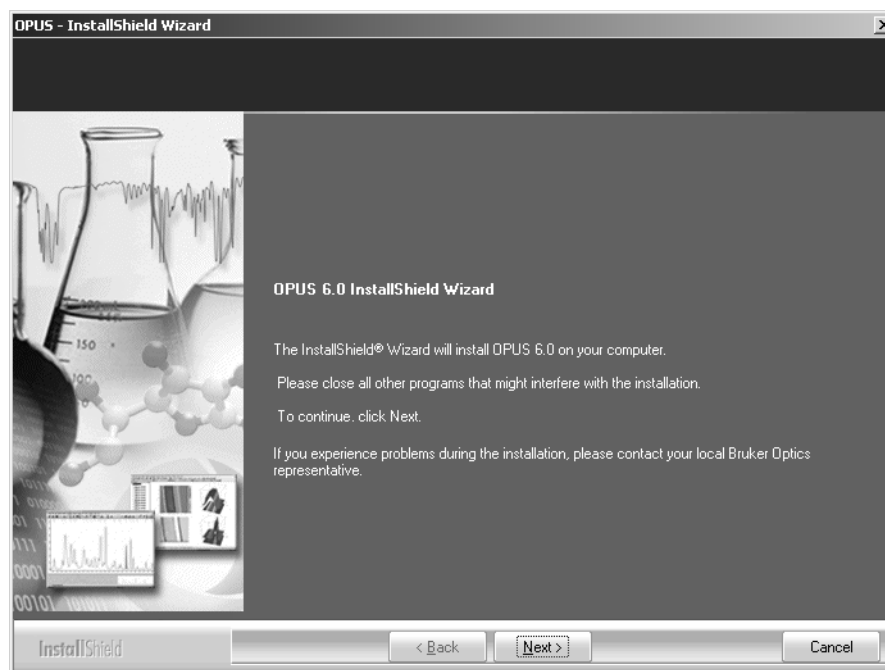
Select the language. The following languages are available:

- Chinese
- English (Plot scripts in A4 format)
- English US (Plot scripts in Letter format)
- French
- German
- Japanese
- Spanish

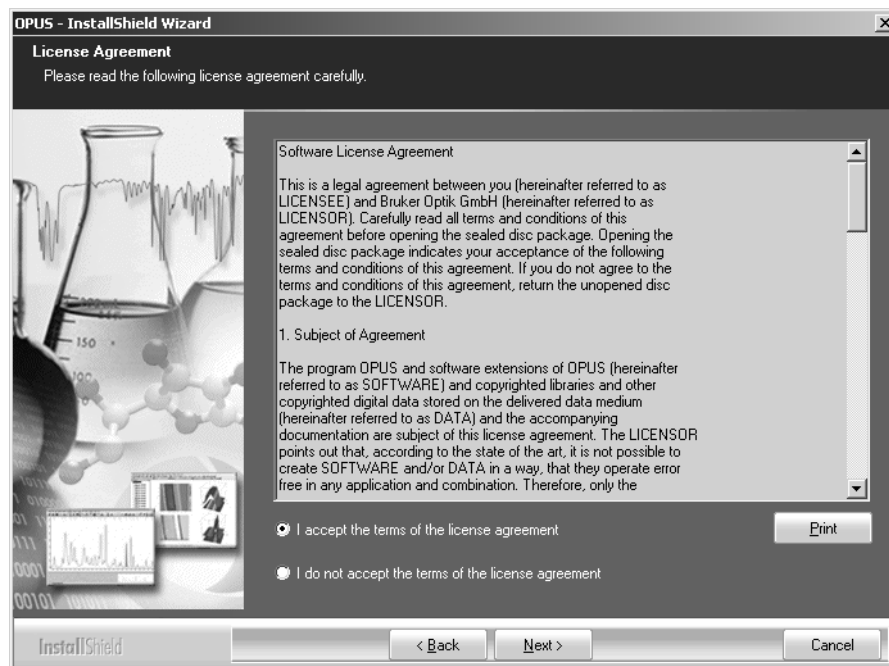
Note: The language selected during installation also defines the language to be used for scripts, plot-scripts, macros, online help and documentation. For these program functions the language selected will be supported as best as possible. In case of failure, OPUS will automatically select the English language.

Click on the *OK* button.

The following window pops up and prompts you to close all programs that might interfere with the installation.

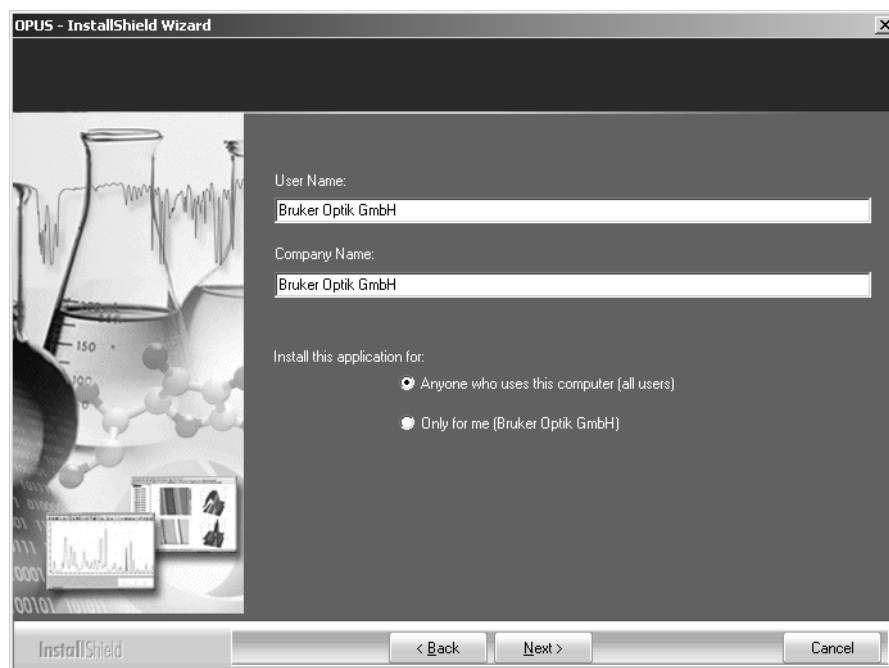


Click on the *Next* button.

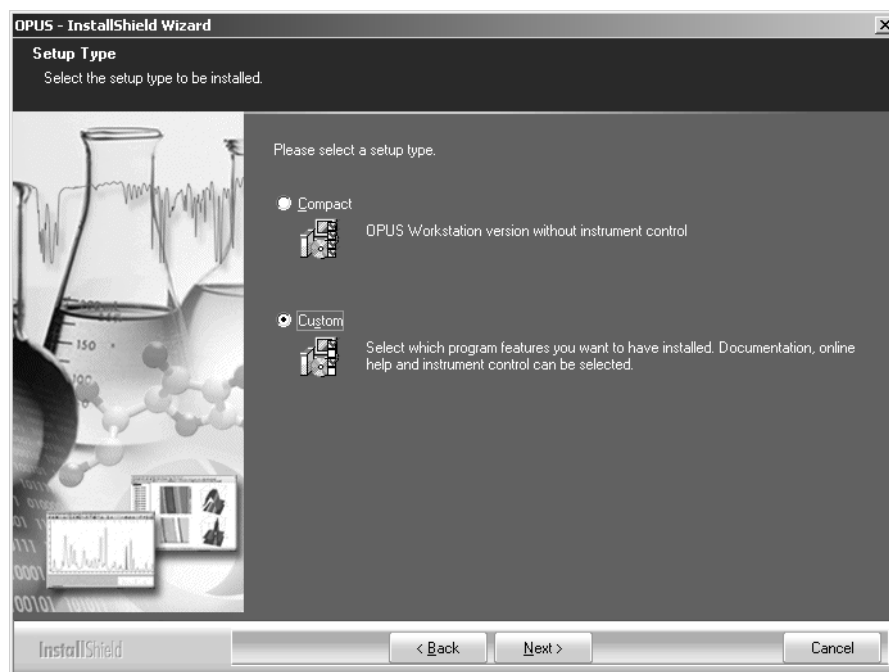


The license agreement is displayed. You have to activate the *I accept the terms of the licence agreement* option button to be able to continue with the installation. To print out the licence agreement click on the *Print* button.

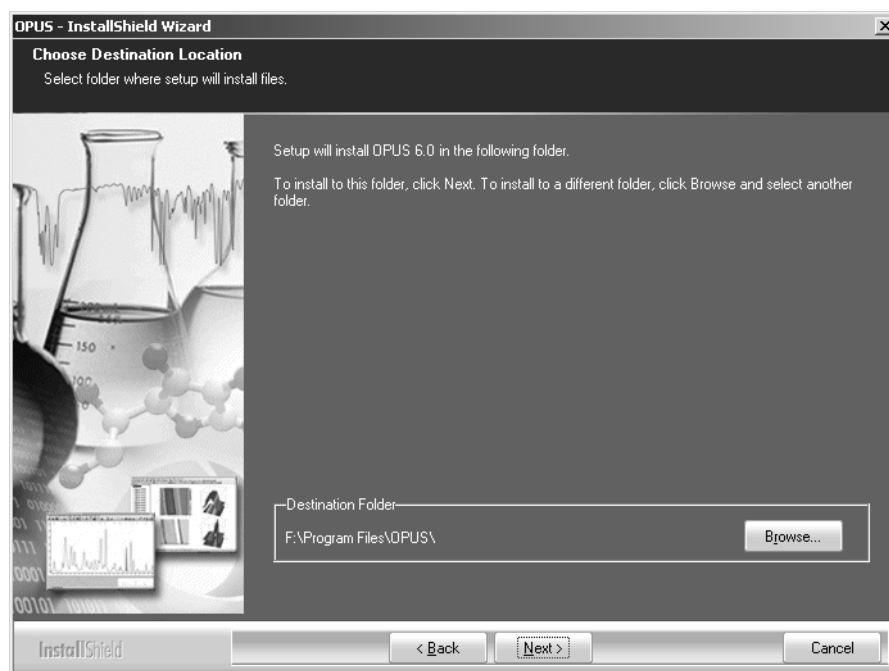
Click on the *Next* button.



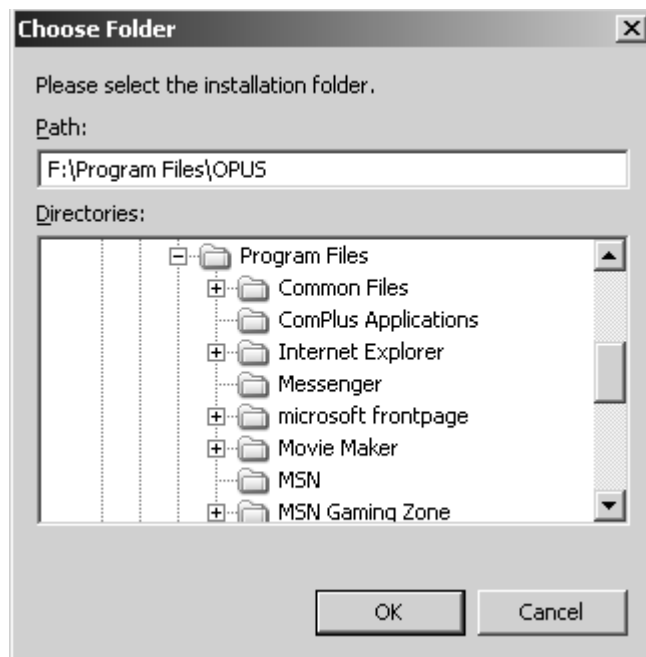
Enter the user and company name and define whether you want to have this application accessed for anyone or exclusively for you. Click on the *Next* button.



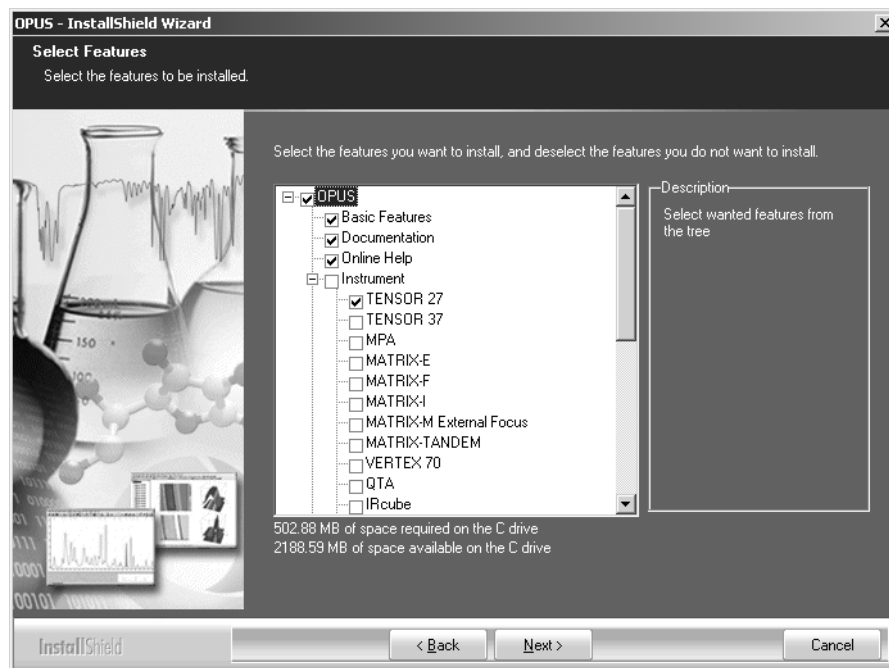
Select the setup type by activating the corresponding option button. If you activate the *Custom* option it is possible to select a different destination folder to the default *C:\Program Files\OPUS* folder.



It is recommended to accept the default setting, i.e. *C:\Program Files\OPUS* of the specified OPUS folder. If required, you can also change the path using the *Browse* button to define the appropriate destination folder.



You can either select an existing directory or enter the directory name manually into the *Path* entry field. Continue by clicking on the *OK* button.



In the *Select Features* dialog you have to activate the respective check boxes of the different features to be installed. The following check boxes are activated by default: *OPUS*, *Basic Features*, *Documentation* and *Online Help*.

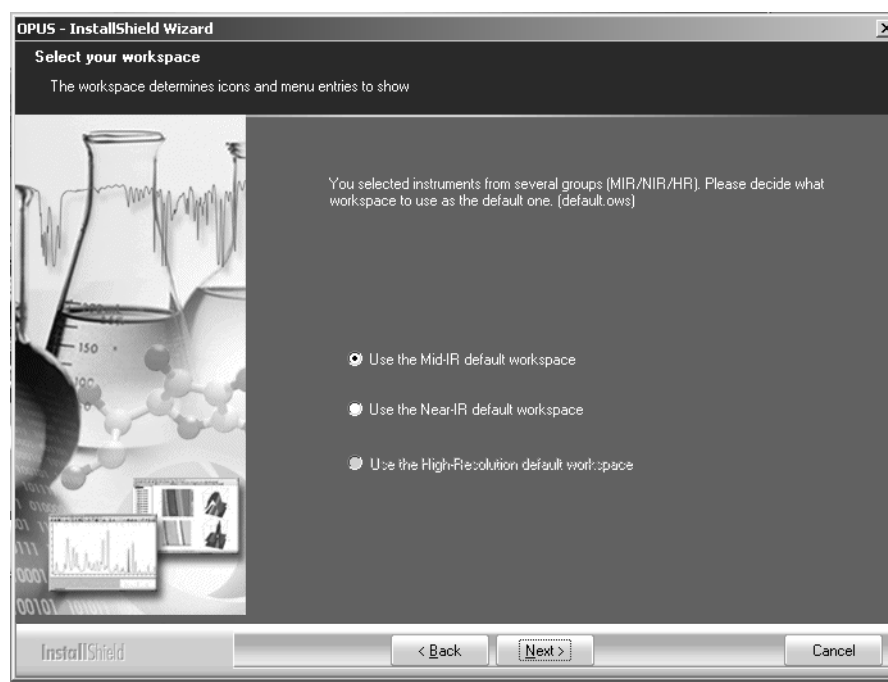
Most single features will be briefly defined in the *Description* group field. The storage space required to install the features selected is indicated and compared to the actual storage space available. If there is not enough space available to

install the features selected, a warning pops up. In this case provide more disk space or modify your selection.

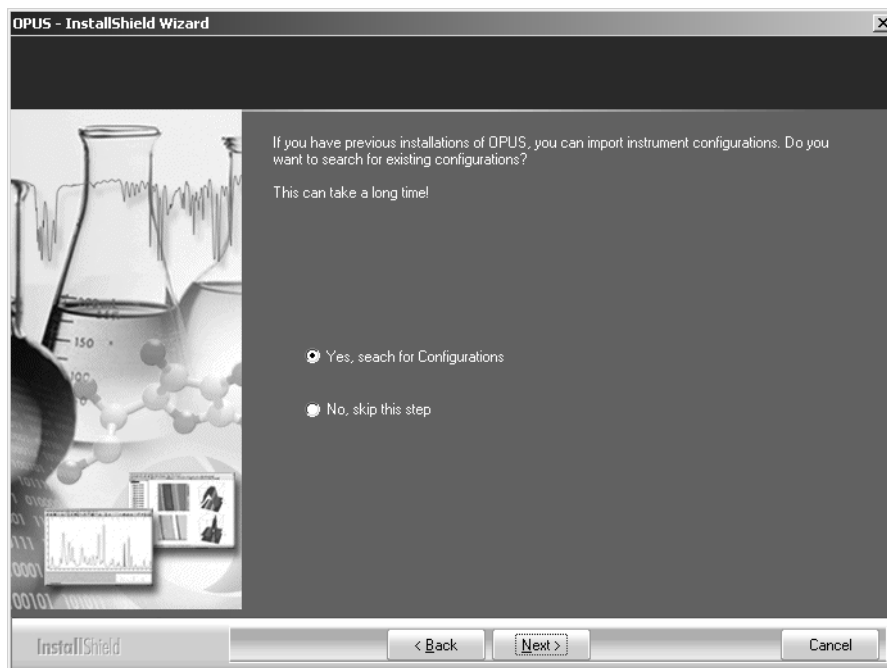
The most important features are:

- **OPUS Basic Features:** this is the actual program. Activate this check box in any case.
- **Documentation:** installs the current version of OPUS manuals as PDF files. We recommend to activate this check box.
- **Online Help:** this is the context-sensitive online help. We recommend to activate this check box.
- **Instrument:** the instrument and its configuration. Activate the corresponding check box. It is possible to support more than one instrument.
- **Extended Demodata:** a large amount of example data for different OPUS features. If you activate all check boxes, be aware that the installation can take quite some time.

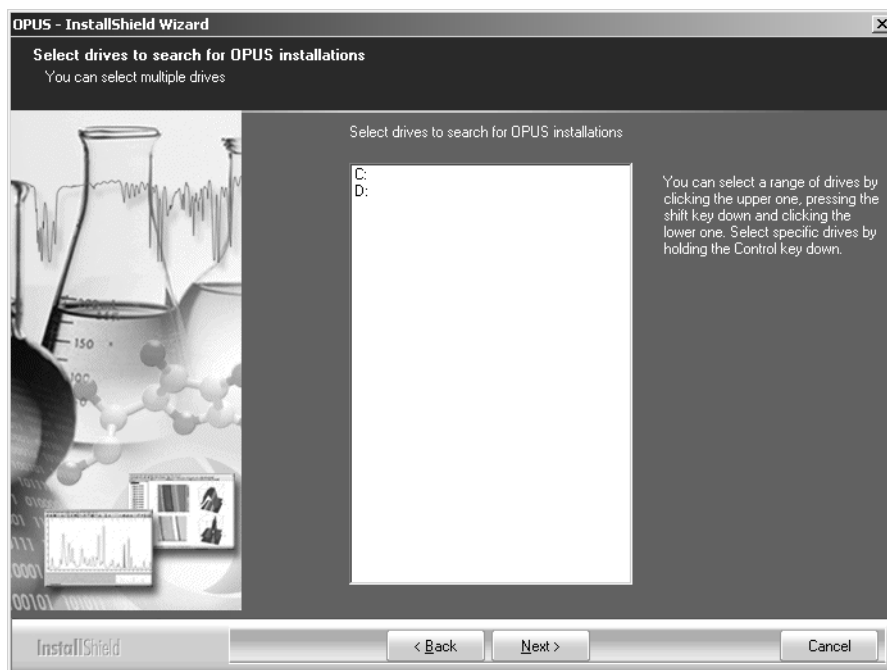
If you have selected at least two instruments with different optical wavelengths, you have to specify the default workspace. The following dialog opens:



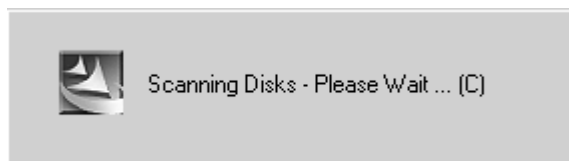
Activate the respective option button and click on the *Next* button.



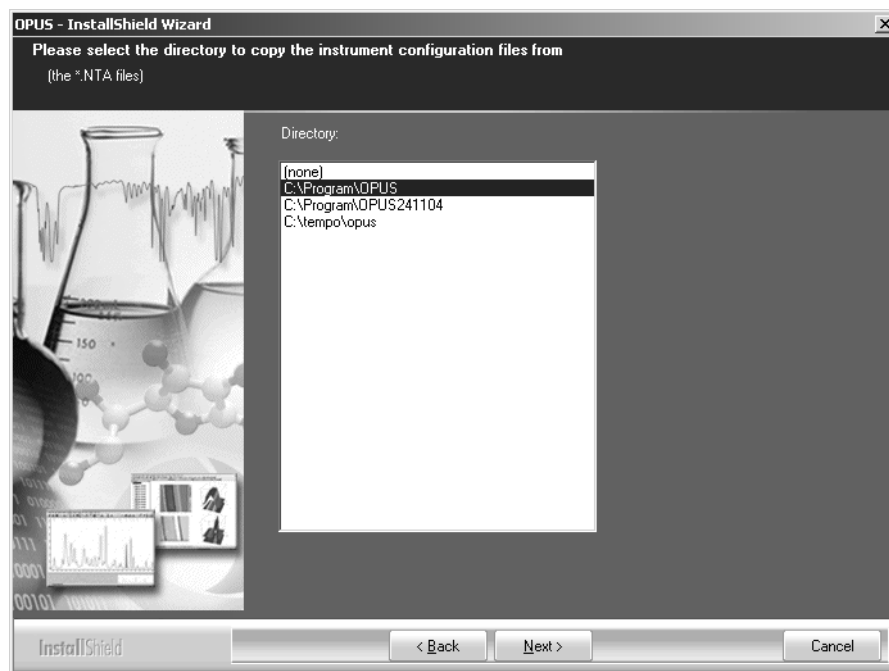
If the current installation directory does not include any instrument configuration file with the extension *.NTA, it is possible to have previous instrument configurations imported. In this case activate the corresponding option button.



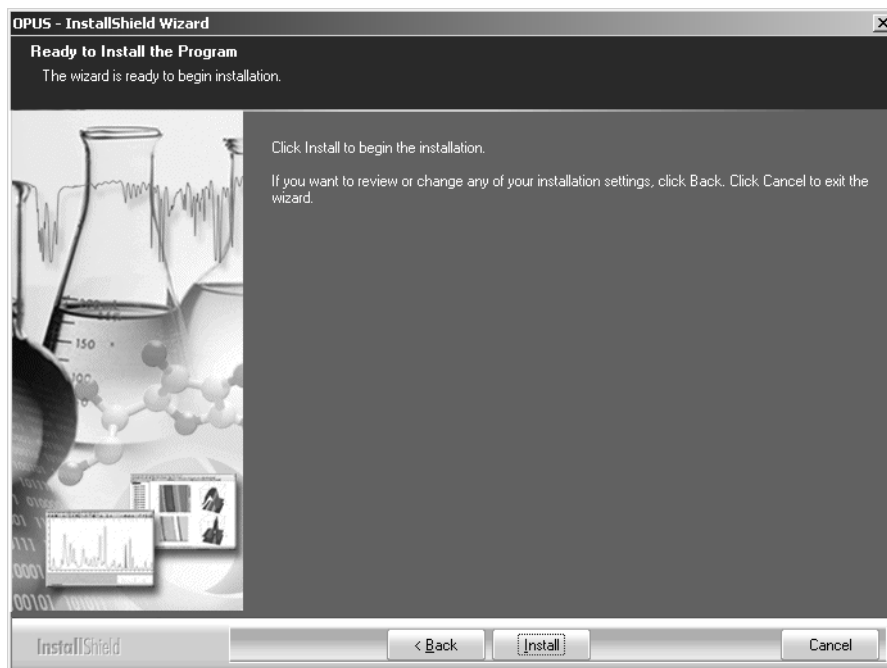
The drive selected will be searched for OPUS installations. A corresponding message box pops up.



Depending on whether *.NTA files have been found, you will be asked to select the directory to be used to copy these files.

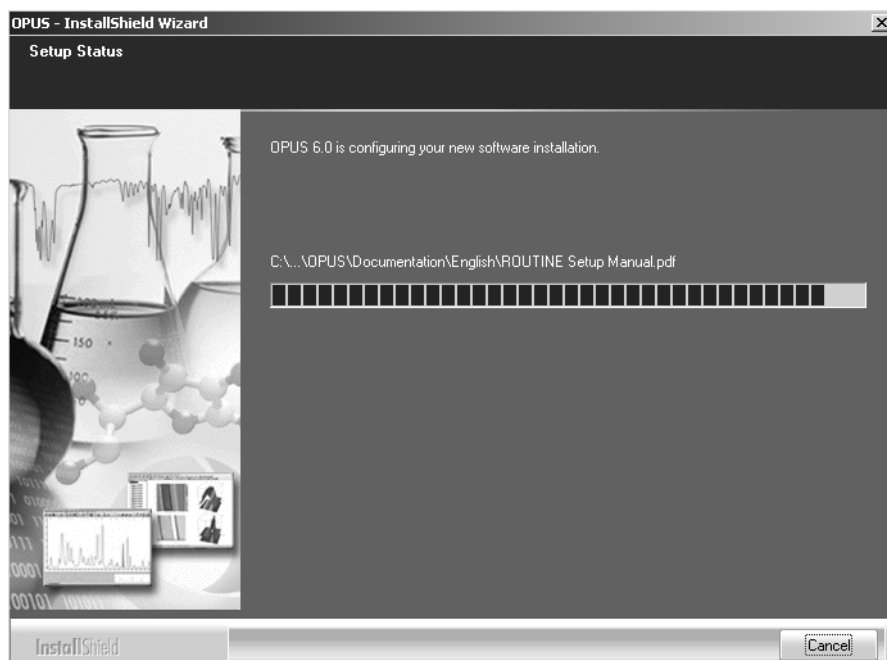


If you do not want to install previous OPUS configurations, skip this step and click on the *Next* button.



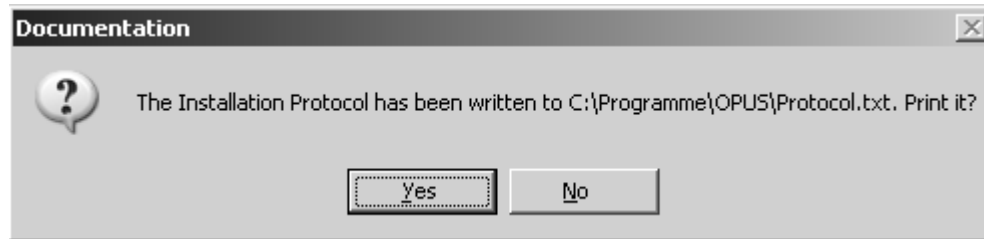
OPUS can now be installed. Click on the *Install* button.

Note: When installing OPUS the *InstalledFiles.txt* file is generated in the *C:\Programme\OPUS* directory. This file contains all the currently installed OPUS files.



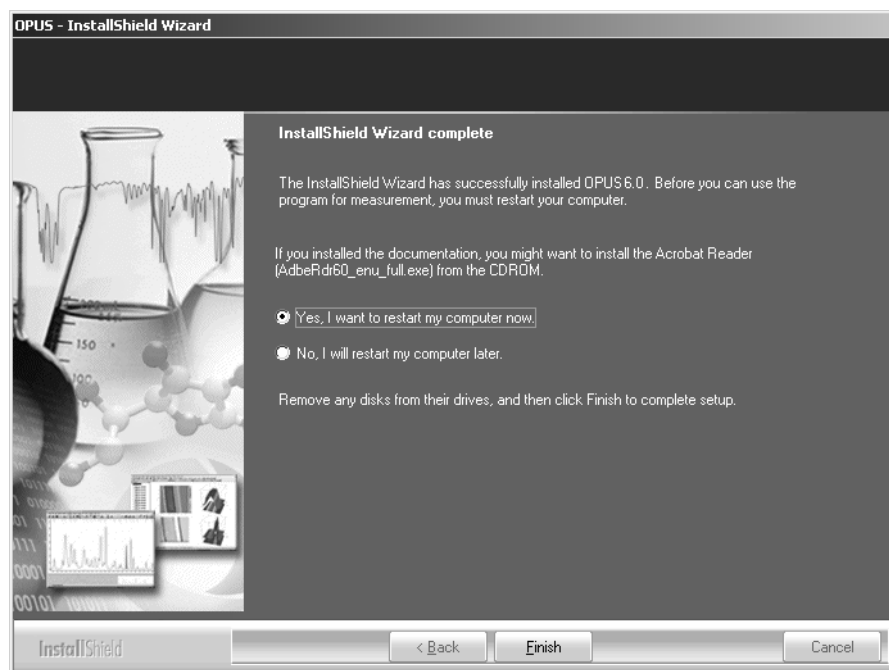
Depending on the features selected the OPUS installation can take quite some time.

An additional dialog pops up indicating the directory in which the OPUS installation protocol has been written.



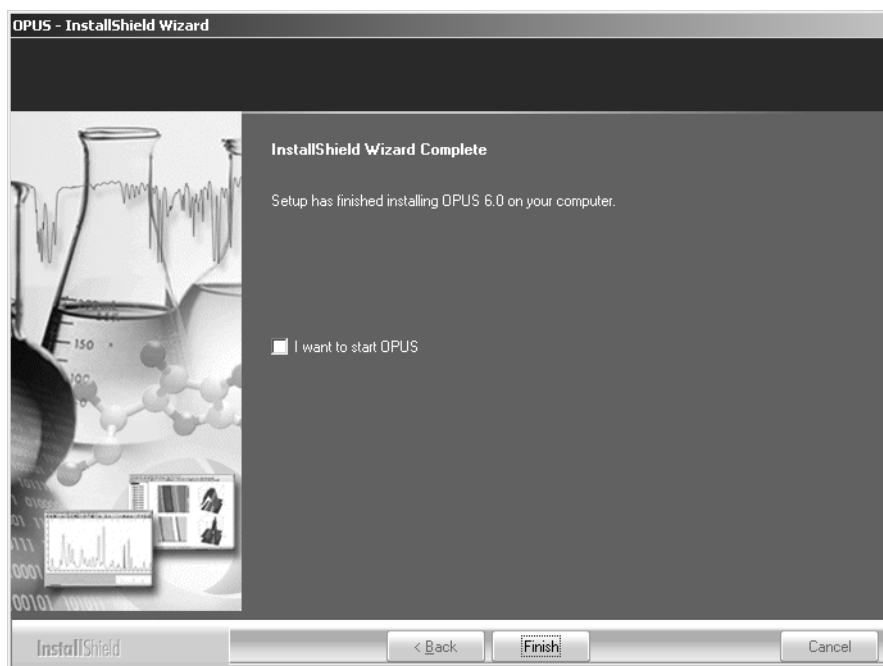
If you want to have the protocol printed, click on the *Yes* button.

If you have selected an instrument with AQP (Acquisition Processor), e.g. VECTOR, the following dialog opens.



Activate the *Yes, I want to restart my computer now* option button and click on the *Finish* button.

The following dialog opens if the installation has been finished and no instrument with AQP has been selected.



You can activate the *I want to start OPUS start* check box and click on the *Finish* button.

Finally, the installation program updates the Microsoft Scripting Engine. If an update is required, you will be asked to restart your computer. In many cases a restart is not obligatory.

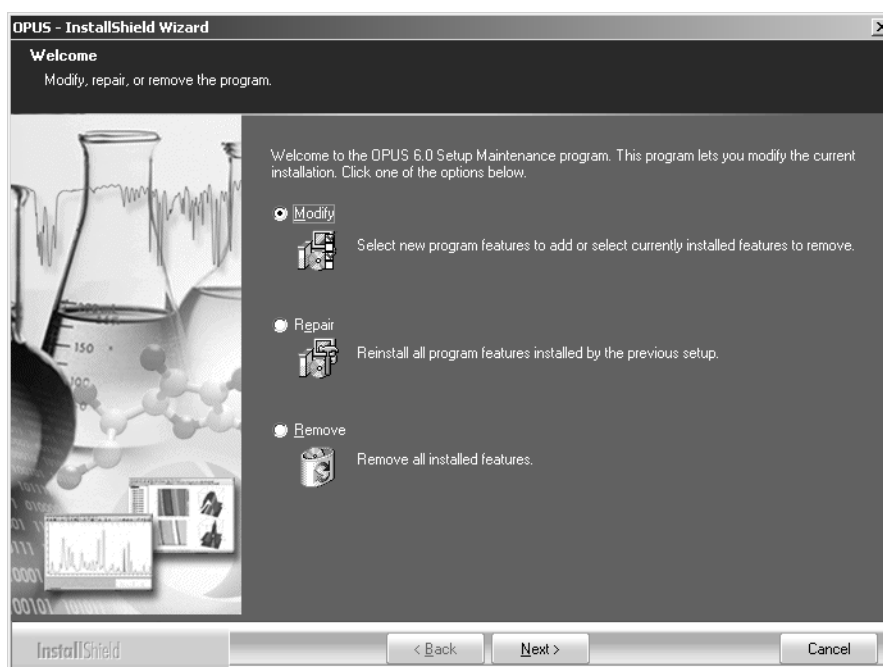
Modifying, repairing and removing OPUS

You can also modify different features of the OPUS version installed. This may be required to increase the storage capability of your hard disk, to add a new instrument to the OPUS features or to repair OPUS.

Click on the Windows Start menu and select the *Control Panel* command. Click on the *Add or Remove Programs* command and select the current OPUS version installed. Right clicking on the current OPUS version provides additional information about OPUS.



If you click on the *Change/Remove* button, the following dialog opens:



Check the respective option button and click on the *Next* button. Depending on the option button selected the last dialog may look slightly different.



To complete the procedure click on the *Finish* button.

